

Turning Graphical Results by Question

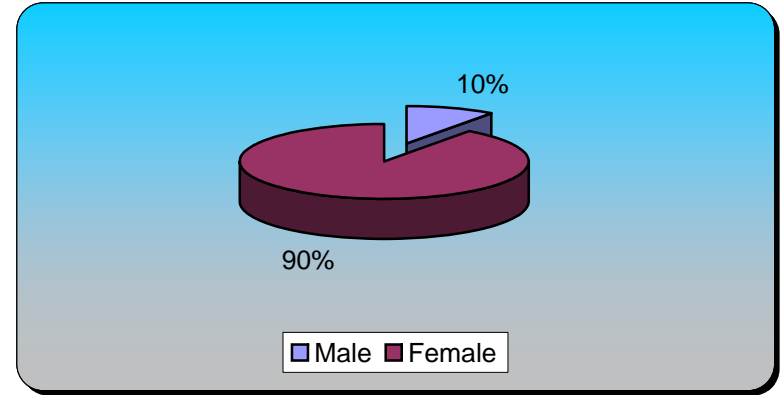
Session Name: ReCon Mtg 7-29-2008 8-07 PM

Created: 7/29/2008 8:08 PM

1.) What is your gender?

Responses

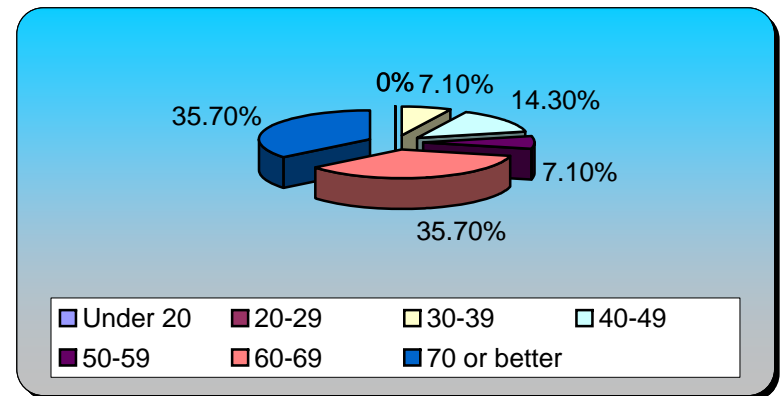
Male	1	10%
Female	9	90%
Totals	10	100%



2.) What is your age?

Responses

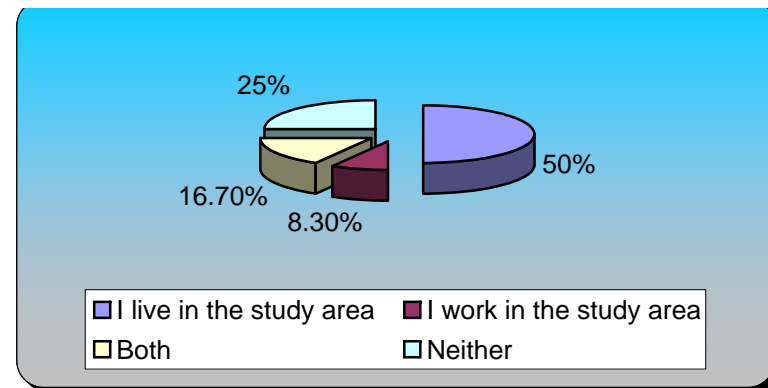
Under 20	0	0%
20-29	0	0%
30-39	1	7.14%
40-49	2	14.29%
50-59	1	7.14%
60-69	5	35.71%
70 or better	5	35.71%
Totals	14	100%



3.) Do you live or work in the study area?

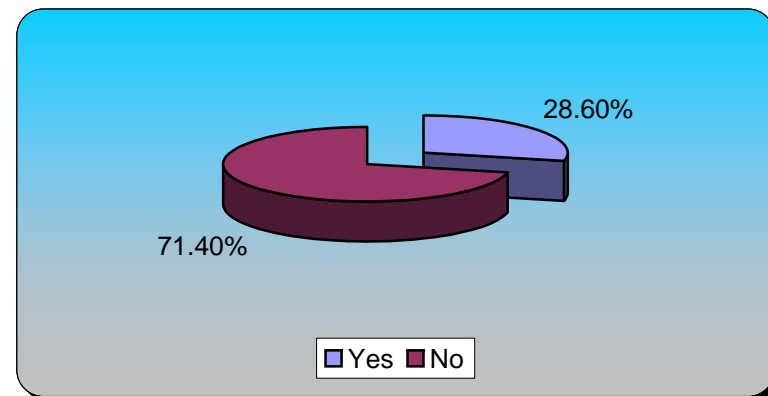
Responses

I live in the study area	6	50%
I work in the study area	1	8.33%
Both	2	16.67%
Neither	3	25%
Totals	12	100%



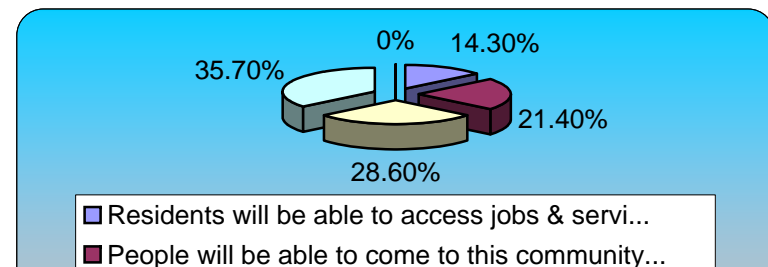
4.) Do you live in one of the new Chicago Housing Authority Plan for Transformation Sites

	<u>Responses</u>	
Yes	4	28.57%
No	10	71.43%
Totals	14	100%



5.) Which statement best represents your hopes & expectations for Reconnecting Neighborhoods?

	<u>Responses</u>	
Residents will be able to access jobs & servi...	2	14.29%
People will be able to come to this community...	3	21.43%
Jobs, amenities, & services will increase & i...	4	28.57%
Residents of the new mixed-income development...	5	35.71%

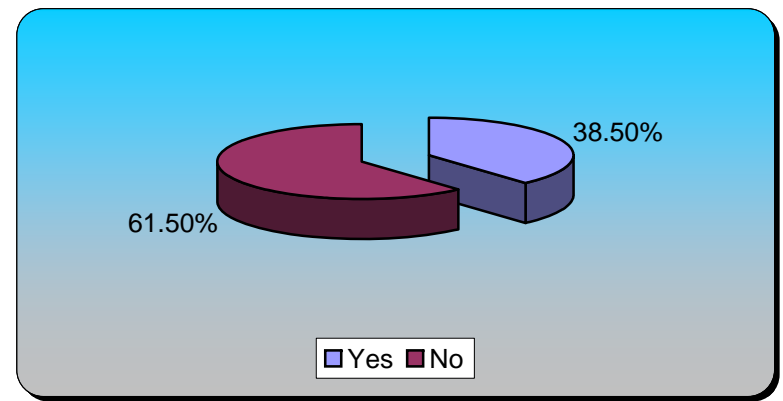


None of the above statements reflect my hopes...	0	0%
Totals	14	100%

- People will be able to come to this community...
- Jobs, amenities, & services will increase & i...
- Residents of the new mixed-income development...
- None of the above statements reflect my hopes...

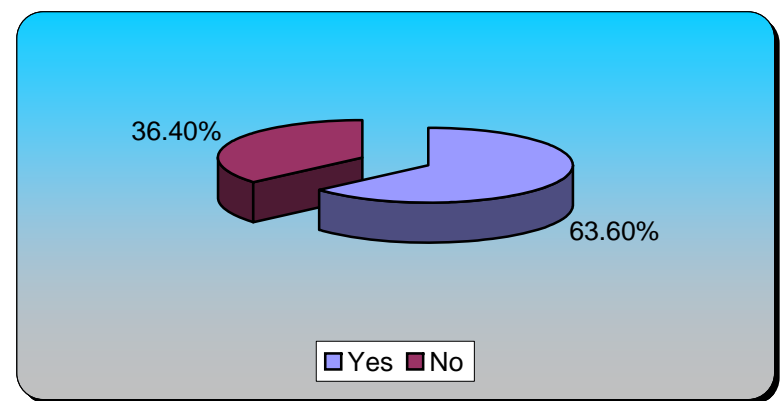
6.) Did you attend any of the Reconnecting Neighborhoods public meetings during the Spring?

	Responses	
Yes	5	38.46%
No	8	61.54%
Totals	13	100%



7.) Do you feel that you have a good understanding of the preliminary recommendations?

	Responses	
Yes	7	63.64%
No	4	36.36%
Totals	11	100%



8.) Do you feel you've had the opportunity to revise, add to, and improve the preliminary recommendations tonight?

	Responses	
Yes	9	75%
NO	3	25%
Totals	12	100%

